

2017 BCSLA Annual Conference, Showcase and AGM

Thursday, March 30 - Saturday, April 1

Delta Grand Okanagan Resort, 1310 Water Street, Kelowna, BC

WHATEVER THE WEATHER

Resilient responses to climate change



British Columbia Society of
LANDSCAPE ARCHITECTS

WELCOME

It is our honour to welcome you to the British Columbia Society of Landscape Architects (BCSLA) 2017 Annual Conference, Showcase of Products and Services and Annual General Meeting.

A big thank you to all of our program and Showcase Exhibitors. With your generosity, the BCSLA can continue to offer valuable programs, services, and activities. Delegates are invited to visit all of the booths to see the latest products and services and to thank our supporters.

We are grateful to the following BCSLA volunteers:

Kathy Dunster, Robert Fershau, Patricia Gooch, Emily Hamilton, Cindy Hsu Becker, Nastaran Moradinejad, Nancy Paul, Dave Thompson, Stephen Watt and Scott Watson.

Cover image: Kelowna09 / Flickr

CONFERENCE AT A GLANCE

THURSDAY, MARCH 30 - Pre-Conference Events www.bcsla.org for updates

This program is preliminary only. In the interests of ensuring the highest quality program content, session topics, scheduled times, titles, meeting rooms and speakers/presenters are subject to confirmation or change. Check www.bcsla.org for updates.

5:30 PM - 6:00 PM **Landscape Café Registration & Buffet**.....Monashee Foyer

6:00 PM - 7:30 PM **BCSLA Poster Pecha Kucha & Social**.....Cascade/Cassier

FRIDAY, MARCH 31

7:30 AM - 7:00 PM **Showcase Exhibits**.....Foyer

7:30 AM - 8:30 AM **Continental Breakfast**.....South Ballroom

8:30 AM - 9:00 AM **Welcoming Remarks; Mayor Colin Basran**.....South Ballroom

9:00 AM - 9:45 AM Debra Guenther FASLA, LEED® AP BD+C: **Design in the Anthropocene Era**...South Ballroom
KEYNOTE **i** generously supported by *Platinum Sponsor: Holland Landscapers*

10:00 AM - 11:15 AM **Truth and Reconciliation**.....South Ballroom
Alan Duncan MBCSLA, FCSLA, MCIP; *Rena Soutar*

Climate Change and the CSLA.....Cascade/Cassier
Bev Windjack MBCSLA, AALA, CSLA, ASLA, LEED® AP BD+C

Playing It Forward.....Monashee Room
Fiona Barton MBCSLA; *Dr. Beverlie Dietze*; *Dr. Lynne Zelll*

FRIDAY, MARCH 31 (cont.)

This program is preliminary only. In the interests of ensuring the highest quality program content, session topics, scheduled times, titles, meeting rooms and speakers/presenters are subject to confirmation or change. Check www.bcsla.org for updates.

- 11:15 AM - 11:45 AM **Coffee Break + Showcase**.....South Ballroom + Foyer
generously supported by *Bronze Sponsors: landscapeforms*
- 11:45 AM - 12:45 PM **Walking Together**.....South Ballroom
Alexander Man-Bourdon MBCSLA, ASLA, ISA CERTIFIED ARBORIST; *Rena Soutar*
- Grow Green**.....Cascade/Cassier
Karin England MBCSLA, B.MUS, MT, MLA
- The Call for a Biophilic Vancouver**.....Monashee Room
Kaitlyn Gillis B.ENG (BUILDING), M.SC (ARCH), MSC (ENV PSYC), LEED® AP, WELL AP, DIRECTOR, WELLBEING + SUSTAINABILITY
- 12:45 PM - 2:00 PM **CSLA Awards Luncheon**.....South Ballroom + Foyer
Presented by Don Wuori MBCSLA
generously supported by *Silver Sponsors: Metrix Professional Insurance Brokers and XL Catlin*
- 2:00 PM - 3:00 PM **Designing Resilient Northern Cemeteries**.....South Ballroom
Heidi Redman MBCSLA
- Landscape-based approaches to mobilizing citizens**.....Cascade/Cassier
Cindy Zhachua Cheng M.SC
- Habitat Restoration Design for MacDonald Slough**.....Monashee Room
Donna Rodman MBCSLA, CSLA, DIPL. NURSING, B.A., CTECH, M.L.A., RLA
- 3:15 PM - 4:15 PM **Post Environmental Landscapes of the North Coast of NSW**.....South Ballroom
Mark Perkins AILA
- The Pope, A Poet, and a Patriot**.....Cascade/Cassier
Don Shafer
- Training a new generation of professionals**.....Monashee Room
Stephen R. J. Sheppard PH.D, ASLA
- 4:15 PM - 5:00 PM **Coffee Break + Showcase**.....South Ballroom
generously supported by *Platinum Sponsors: WMW Reprographics Ltd.*
- 5:00 PM - 6:00 PM Don Luymes: Big, Messy City-making**.....South Ballroom
KEYNOTE 2 generously supported by *Platinum Sponsor: Holland Landscapers*
- 6:00 PM - 8:00 PM **Welcoming Okanagan Connection Reception**.....South Ballroom
proudly supported by *Platinum Sponsor: Abbotsford Concrete Products Ltd.*

SATURDAY, APRIL 1

This program is preliminary only. In the interests of ensuring the highest quality program content, session topics, scheduled times, titles, meeting rooms and speakers/presenters are subject to confirmation or change. Check www.bcsla.org for updates.

8:00 AM - 10:30 AM	Showcase	South Ballroom + Foyer
8:00 AM - 8:45 AM	Continental Breakfast	South Ballroom + Foyer
8:45 AM - 9:00 AM	Welcoming Remarks	South Ballroom + Foyer
9:00 AM - 9:45 AM	Marta Farevaag <small>BCSLA (HONOURARY), FCIP, PIBC</small> : Whole Systems Infrastructure Planning	South Ballroom + Foyer
	KEYNOTE ③ generously supported by <i>Bronze Sponsor</i> : CDm2 Lightworks	

9:45 AM - 10:15 AM	Coffee Break	South Ballroom + Foyer
	generously supported by <i>Bronze Sponsors</i> : landscapeforms	
10:15 AM - 10:30 AM	Mobile Tour Muster	Hotel Lobby

Mobile Tours *Booked on a first-come first-served basis*

10:30 AM - 12:30 PM	①	Urban Sketching <i>with Lindsay Clement</i> <small>MBCSLA, B.LARCH</small>
	②	Kelowna's Downtown Public Spaces <i>with Andrew Gibbs</i> <small>MBCSLA</small> & <i>Terry Barton</i> generously supported by <i>Bronze Sponsor</i> : Maglin Site Furniture
	③	UBC Okanagan <i>with Dean Gregory</i> <small>MBCSLA, ASLA, LEED® AP</small> & <i>Marta Farevaag</i> <small>MBCSLA (HON) FCIP, PIBC</small>
	④	Mission Creek Park <i>with Don Dobson</i> Tours leave on time (rain or shine). Please wear sensible footwear and dress appropriately for the climate.

10:30 AM - 12:00 PM	Film Screening: One Big Home	Cascade/Cassier
12:00 PM - 12:30 PM	Break and Mobile Tour Return	
12:30 PM - 2:00 PM	BCSLA Awards Luncheon	Okanagan Ballroom
	<i>Presented by Al Neufeld & Jacqueline Lowe</i>	
1:30 PM - 2:30 PM	AGM Registration	Okanagan Ballroom
2:30 PM - 2:45 PM	BCSLA New Members Book Awards	Okanagan Ballroom
	<i>Presented by Mark Vaughan</i> generously supported by <i>Bronze Sponsor</i> : Cedar Crest Lands (B.C.) Ltd.	
2:30 PM - 4:30 PM	2017 BCSLA Annual General Meeting	Okanagan Ballroom
5:30 PM - 11:00 PM	Closing Reception	Okanagan Ballroom
	generously supported by <i>Platinum Sponsor</i> : T. Moscone & Bros. Landscaping Ltd.	

ABSTRACTS AND SPEAKER BIOS

FRIDAY, MARCH 31

This program is preliminary only. In the interests of ensuring the highest quality program content, session topics, scheduled times, titles, meeting rooms and speakers/presenters are subject to confirmation or change. Check www.bcsla.org for updates.

KEYNOTE ① - Design in the Anthropocene Era

Debra Guenther FASLA, LEED® AP BD-C

ABSTRACT More than half of the world's population is living in cities. How we build and live in our cities is perhaps the greatest opportunity to explore how to respond to human and natural processes that are now considered so tightly linked that this era is called the "Anthropocene"—an era of human influence. How can designers respond to conditions of climate change, species loss and human inequity with urgency and use everyday projects as a transformational tool for communities? Deb Guenther will share a wide range of work from Mithun, an interdisciplinary firm that strives to design for positive change.

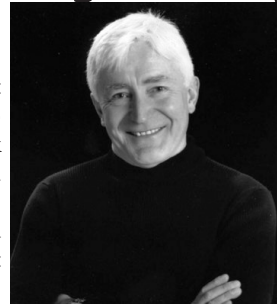


BIO **Debra Guenther** FASLA, LEED AP BD-C Deb is a partner and landscape architect at Mithun, an integrated design firm of architects, landscape architects and urban designers in Seattle and San Francisco that design for positive change. Deb works on diverse projects for public, private and non-profit clients. She was awarded the American Society of Landscape Architect's President Medal in 2010 for her work on landscape performance. As resilience issues have emerged she helps the firm think about the impacts on design practice and research. She is a board member for Ecodistricts, a board emeritus and climate change task force member for the Landscape Architecture Foundation and for many years enjoyed cross-border, bioregional work as a board member and fellow of the Cascadia Region Green Building Council.

Truth and Reconciliation: Finding Our Way Forward

Alan Duncan MBCSLA (INACTIVE), FCSLA, MCIP; Rena Soutar

ABSTRACT In 2014, the Musqueam, Squamish and Tsleil-Waututh First Nations signed a declaration to speak with one voice. In July, they wrote a joint letter to the Vancouver Park Board requesting they be recognized as rights-holders in Stanley Park rather than stakeholders, and to work with them to increase First Nations recognition and visibility in the park. In January 2016, Park Board endorsed eleven ambitious strategies to advance the work of the Truth and Reconciliation Commission in programs and facilities, thus becoming the first municipal government body in Canada to implement recommendations in response to the Commission's calls to action.



Starting at the end of 2014, we have been working very closely with the nations building relationships, developing protocols and striving towards short- and long-term collaborative decision-making around the use and future designs of our parks, Stanley Park in particular, in the spirit of Truth and Reconciliation.

The focus of our presentation would be to share lessons learned. Some achievements have been symbolic, like bringing together for the first time in Park Board history the elected Park Board and Chiefs and elected officials of the Musqueam, Squamish and Tsleil-Waututh First Nations with a luncheon and gift exchange to celebrate embarking upon a new working relationship for Stanley Park while facilitating major organizational change. More tangible milestones so far include hiring a staff Archaeologist, a day-long visioning exercise, drafting a preliminary Best Management Practices for Cultural and Archaeological Resources, streamlining project referral processes and drafting preliminary maps of archaeological sensitivity zones.

BIOS **Alan Duncan** MBCSLA (INACTIVE), CSLA, MCIP graduated with a Bachelor of Landscape Architecture from the University of Guelph in 1973 and a Master of Arts in Planning from the University of British Columbia in 1990. He was accepted as a member of the AALA and CSLA in 1982, the CIP in 1992, and the BCSLA in 1994.

Alan has worked across Canada - PEI Department of Environment and Tourism, Ontario Hydro, the Planning Departments of Etobicoke and Edmonton, and the Groupe d'intervention urbaine de Montréal - as well as working for a design/build firm in Nice in 1984. After a stint producing parades, public celebrations and public art policy, he joined the City of Vancouver Planning Department in 1989. He coordinated such landscape policy and public realm projects as regulation of private property trees and the Ridgeway Greenway, both which received CSLA recognition for innovation, and the Wellness Walkways project which received a PIBC award for excellence in planning. He was appointed first Environmental Planner in the Vancouver Park Board in 2004.

Rena Soutar Cha'an Dtu is of Haida descent and works as a Cultural Planner for the Vancouver Board of Parks and Recreation. She has worked on project consultations with the Musqueam, Squamish, Tsleil-Waututh, and Lil'wat peoples in environmental, cultural, and intergovernmental contexts. Her engagement with Aboriginal artists on public art installations includes outreach to every province and territory across Canada.

She is the author of Songhees, a cultural biography of the Songhees Nation in Victoria, BC. She is also editorial contributor to "O Siyam: Aboriginal Art Inspired by the 2010 Olympic and Paralympic Winter Games", a book chronicling the Venues Aboriginal Art Program, a project which she also coordinated.

She makes her home in Greater Vancouver with her husband and four year old daughter.

This program is preliminary only. In the interests of ensuring the highest quality program content, session topics, scheduled times, titles, meeting rooms and speakers/presenters are subject to confirmation or change. Check www.bcsla.org for updates.



Climate Change and the CSLA

Bev Windjack MBCSLA, AALA, CSLA, ASLA, LEED®AP BD+C, ERPSC

ABSTRACT The CSLA Climate Change Task Force (CSLA CCTF) has been working hard over the past year – liaising with other professions and making inroads with the Federal Government. On behalf of the CSLA, I will lead a presentation on what the CSLA CCTF has recently accomplished, is working on, and plans for the future. The CSLA has a Climate Change deck that is used for ongoing networking; this would be adapted for the presentation. As well, handouts may be available!

A few items the CSLA CCTF is working on and believe would be of interest to the membership include:

- Building relationships with MPs, in particular the Minister of Tourism & Small Enterprise, and House
- Leader.
- Evaluation and update of CSLA Position Paper on Climate Change
- Position Paper on Livable Cities
- World Design Summit
- IFLA Americas Accord
- Site/Climate Change Checklist for Landscape Architects
- Pan Canadian Framework on Clean Growth & Climate Change
- National Master Specification update
- Working with NRCAN
- Curriculum Review
- Blog
- Climate Change related education for membership

We are also interested in hearing what information BCSLA members are seeking with respect to Climate Change, and how the CSLA CCTF might support their learning experience.

BIO Bev Windjack MBCSLA, AALA, CSLA, ASLA, LEED®AP BD+C, ERPSC Bev is a practicing landscape architect with a passion for placemaking and integrated design. She is happiest when collaborating with a range of disciplines to create sustainable and forward thinking design solutions.

Playing It Forward: Learning landscapes make resilient humans



Fiona Barton MBCSLA, CSLA; Dr. Beverlie Dietze; Dr. Lynne Zettl

ABSTRACT The motivation behind this presentation is to engage in dialogue where landscape architects participate and are thought leaders in the challenge of having our fellow human beings live healthily and harmoniously with the natural environment. The resiliency of people will be achieved by recognizing the role nature plays in health; and through exposure to the natural environment engender protection of the planet.

With children expected to have a shorter life expectancy than their parents, or live longer, but in poor health, what are we doing as landscape architects to address this problem? The workforce has never been more stressed, time-poor and anxious and this is manifesting in our parenting styles. Dysregulated children become dysfunctional adults. What does this mean for society in general?

BIOS Fiona Barton MBCSLA, CSLA is a registered member of the BC Society of Landscape Architects and the owner of Outland Design Landscape Architecture, a full service design consultancy based in the Central Okanagan. In 2013, Outland Design collaborated with Okanagan College on an NSERC Applied Research Grant with a focus on natural outdoor play. Outland Design staff were trained in an assessment tool that allows the team to rate outdoor spaces for their natural outdoor play values.

Dr. Beverlie Dietze is the Director of Teaching and Learning with Okanagan College and an internationally recognized expert on outdoor education. She is an experienced post-secondary professional who has spent three decades in the sector in a variety of roles that include faculty member, department head, director and campus dean. Dr. Dietze holds a Doctor of Philosophy in Higher Education from the University of Toronto, a Master’s of Adult Education from St. Francis Xavier University and a Bachelor of Education from the University of New Brunswick.

Dr. Lynne Zettl is a licensed clinical psychologist with a private practice in Kelowna, British Columbia. She specializes in the treatment of PTSD and developmental dysregulation in adults and children from a psychophysiological perspective. Her doctoral dissertation researched the experience of trauma in emergency service personnel and the efficacy of a psychophysiological treatment for posttraumatic stress disorder.

Walking Together: The Healing Power of the Survivor's Pole at Pigeon Park

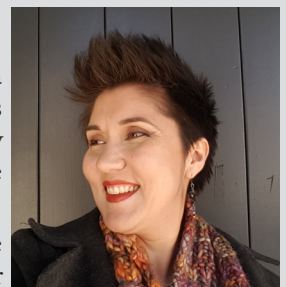
Alexandre Man-Bourdon MBCSLA, ASLA, ISA CERTIFIED ARBORIST; Rena Soutar

ABSTRACT Pigeon Park is the smallest yet highly used parks in downtown Vancouver. As the epicentre of the Downtown East Side (DTES) the park deals with a struggling population, open sale, trade and use of illegal substances, homelessness and mental illness. The DTES also has a prominent First Nations population. Although the park was renewed in 2010 after years of public engagement focused on the existing community, it is increasingly becoming a point of conflict between new residents and the primary users.

Pigeon Park was chosen by the community as the site for the installation of a Survivor Pole. Carved by a Haida artist, the pole represents survivors from a variety of visible minorities and cultures including First Nations which reside in the immediate community. The pole and the ceremony during which it was installed not only support the notion that adding a cultural icon to the park could foster a sense of communal care for the space but is also part of a greater conversation about shared values in public spaces.

This presentation will discuss the successes of the Survivor Pole project to date as well as how the addition of a sacred artifact has the capacity to generate a newfound respect for a space within the Greater Vancouver community. Finally, the presentation will shed light on a successful working relationship with First Nations groups and how the use of a "cultural translator" had the capacity to ensure the priorities and protocols of all parties involved were respected.

BIO Alexandre Man-Bourdon MBCSLA, ASLA, ISA CERTIFIED ARBORIST With a degree in landscape architecture and contracting management from Mississippi State University, Alexandre received a Masters in Advanced Studies in Landscape Architecture from the University of British Columbia. Alexandre is currently a project manager and landscape architect with the Vancouver Park Board as well as being an ISA certified arborist.



Grow Green: A community resource for resilient gardening practices

Karin England MBCSLA, B.MUS, MT, MLA

ABSTRACT Grow Green (growgreenguide.ca) was created by Metro Vancouver in collaboration with the UBC Botanical Garden to encourage adoption of sustainable gardening practices. This interactive online resource shares practical solutions and tools to create gardens which support regional sustainability initiatives such as reducing water use, providing wildlife habitat, controlling invasive species, increasing biodiversity, promoting the use of compost, improving food security, and facilitating storm water absorption. Furthering these initiatives supports the creation of a region resilient to the effects of climate change.

The target audience for Grow Green are those looking for tools to help them create sustainable green spaces and the information shared is applicable to practitioners in many disciplines, including landscape architecture. Grow Green features include free customizable garden plans and a plant selection tool vetted by local experts at the UBC Botanical Garden which identifies species suitable for growing in particular garden conditions. Green Green can help you create beautiful, sustainable outdoor spaces with a positive impact on our local environment.

BIO Karin England MBCSLA, B.MUS, MT, MLA Like so many landscape professionals, Karin's connection to the land grew from a childhood spent romping around in the great outdoors. Her greatest passion is sharing her love of landscape design, particularly plant material, with others. An award-winning designer, she strives to provide people with engaging, sustainable outdoor spaces that enrich their lives. She holds Master of Teaching and Master of Landscape Architecture degrees, and is an experienced practitioner and educator. In addition to her work on Grow Green as a Park Planner with Metro Vancouver, she is a regular collaborator at the UBC Botanical Garden, and was part of the team which published 'Vancouver Trees' in 2015.



This program is preliminary only. In the interests of ensuring the highest quality program content, session topics, scheduled times, titles, meeting rooms and speakers/presenters are subject to confirmation or change. Check www.bcsla.org for updates.

The Call for a Biophilic Vancouver

Kaitlyn Gillis B.ENG (BUILDING), M.SC (ARCH), MSC (ENV PSYC), LEED® AP, WELL AP



ABSTRACT Vancouver is a city that boasts a natural beauty unlike many other urban environments around the world. However, as with many urban environments, there are areas of improvement that are sorely needed. One of these areas is the integration of nature and natural processes into the built environment, also known as biophilic design. While Vancouver's beauty extends beyond its beautiful waters, majestic mountains, and peaceful forests, many people are unable to experience nature on a day-to-day basis. With modern day urbanization, combined with the amount of time we spend indoors, never before have we needed more injections of nature throughout our communities and inside our buildings. The benefits of exposure to nature on human health are clear, and can provide a resilient solution to many of the health, environmental, and social issues that we face.

As a global city, Vancouver can do more to increase access to nature and this presentation will provide a framework for Vancouver to be known as a biophilic city. Kaitlyn will go into depth on what is biophilic design and discuss current global research and trends towards creating biophilic cities, including original research she undertook as part of her Master of Science in Environmental Psychology program. Finally, Kaitlyn will issue a call to action for all building professionals to advocate for healthier, greener and more resilient cities through the injection of nature into the built environments.

BIO Kaitlyn Gillis B.ENG (BUILDING), M.SC (ARCH), MSC (ENV PSYC), LEED AP, WELL AP Kaitlyn is a Director of Wellbeing + Sustainability at Light House Sustainable Building Centre in Vancouver, BC. She holds Master of Science degrees in Environmental Psychology and Architecture and an undergraduate degree in Building Engineering. Kaitlyn is a WELL Accredited Professional, a LEED Accredited Professional and is currently involved in work on health, wellbeing and sustainability in the built environment. She has published articles related to environmental psychology, biophilic design, and sustainable design.

Designing Resilient Northern Cemeteries: Lessons from Nunavut

Heidi Redman MBCSLA



ABSTRACT The Iqaluit Municipal Cemetery opened to the public in October, 2014. Led by landscape architects, the multi-disciplinary team collaborated on all aspects of the project from site selection, through design, construction and operations. Working closely with Inuit elders and Council the team aimed to ensure the cemetery would respect the Inuit culture, and their connection to the land.

Early questions explored included: How would the cemetery function without diminishing the delicate arctic tundra landscape? How could the cemetery act as an inclusive community space? How could the municipality increase resilience in its operations in the face of climate change impacts? This paper will focus on sharing lessons learned in the process of creating a resilient cultural landscape through the lens of cemetery design.

The design drew on local and traditional knowledge with a focus on natural materials and simple forms to honour indigenous traditions. Environmental values underpinned the design approach in tandem with a

customized operations plan to preserve the tundra and manage changes in permafrost. A sequencing of active burial areas ensures the tundra ecosystem will be sustained over time.

Today, the frequent and varied use of the site by people in the community demonstrates a transformation in the resident's perception of what a cemetery can and should be. From passive recreation to remembrance and celebration, the site has become a valued open space where Inuit culture is celebrated.

In the words of the Mayor, "Thank you for creating this cemetery that is so respectful of this place."

BIO Heidi Redman MBCSLA Heidi is a Landscape Architect and Senior Associate with LEES+Associates, where she has contributed to open space planning and design projects over the last 10 years. Heidi has led a number of projects across northern and western Canada including the design of a new municipal cemetery in Iqaluit, Nunavut. She is currently based out of the firm's regional office in Whitehorse.

Landscape-based approaches to mobilizing citizens for resilience at the neighbourhood block scale

Cindy Zhaohua Cheng M.Sc



ABSTRACT The pressures of climate change call for more engaged and informed citizens to help build resilient neighbourhoods and maintain a healthy, protective urban forest. Successful volunteer stewardship programs exist, but how can we scale them up and deepen citizens' engagement & literacy on urban forestry? Research shows we need more than information to change perceptions and behaviour: it requires experiential learning, place attachment, peer pressure, and compelling visual learning tools.

BC researchers have developed an engaging process to guide local action towards climate-proofing neighbourhoods. The Citizens Coolkit is a do-it-yourself tool for engaging residents on urban forestry and climate change at the residential block level, adapting techniques from landscape architectural practice. In several communities, prototype toolkits have been tested involving fun activities in a 4-step framework: starting a conversation with a residents' photo gallery revealing climate change in their backyards; mapping of trees & canopy; future visioning; and action planning. The goal is to build capacity & literacy on vulnerabilities and resilience solutions that would inspire collective action and enhance quality of life, eg. expanding tree canopy to offset future heatwaves or reduce flooding.

BIO **Zhaohua Cheng** M.Sc Zhaohua has been heavily involved with multiple projects in climate change future scenarios, forest carbon sequestration, carbon trading system, low carbon economy, and climate change education and engagement. She has recently received her Master's degree in Forestry, where she conducted a cross-sectional survey exploring the public's perceptions of climate change and low carbon economies in smaller cities in China. As a program coordinator of the Urban Forestry program and a research analyst at Collaborative for Advanced Landscape Planning, she is also interested in exploring various benefits and costs of urban forests, and using innovative approaches (e.g. interactive visualizations) to inform and engage local communities in urban forestry management and climate change mitigation.

Habitat Restoration Design for MacDonald Slough: Reversing Drought Conditions to Restore a Slough, Succession Planting, and the Impact of Climate Change on Aquatic Plant Selections in the Future

Donna M. Rodman MBCSLA, CSLA, DIPL. NURSING, B.A., CTECH, M.L.A.



ABSTRACT In response to a compensation request for the rezoning of agricultural land and construction of a proposed industrial commercial development, a habitat authorization project was initiated to restore MacDonald Slough in Richmond, B.C. An infrastructure shutdown of the water supply to the original slough increased the rigour to retrofit and restore the habitat to attain regulatory approvals, making the project biodiverse, function as a slough, conserve bird and fish habitat, and allow stream keeping and public education along the water course. The Rice Mill project authorization took several years as the habitat was degraded, water quality and soil quality were poor, the dried out channels provided no opportunity for fish and amphibians to thrive, and public access was restricted. The author will present one of her most enriching research, scientific, and design experiences as a landscape architect, involving the design of three detention ponds and two channels. It was intensely collaborative between Biologists, Civil Engineers, Hydrologists, Architects, the client, and the City of Richmond. This presentation will provide insight into the research required to design for three distinct 'legal' landscapes: an Ecological Sensitive Area, a Remediation Area, and an Onsite Area (for the Development); two regulatory agencies, the Department of Fisheries and Oceans and B.C. Hydro; and twelve habitat zones. Approvals were successful due to detailing, successional planting planning, and proposing to restore habitat health of existing riparian species. The author will explain future prospects of aquatic plant selections to reduce the risk of climate change impacts on planting designs.

BIO **Donna Rodman** MBCSLA, CSLA, DIPL. NURSING, B.A., CTECH, M.L.A. Donna Rodman, ('99 MLA UBC, MBCSLA) is a multi-disciplined registered landscape architect. Donna began her career in Nursing followed by Urban Geography and Human Factors research for the Aerospace and Space Exploration Industry. Her consulting and professional design work started in 1988 specializing in Universal Design. Our Designs, incorporated in 1992, provides collaborative, evidence based research and design services in restoration planting, accessibility for people with disabilities, healthcare, and culturally significant landscapes. Donna is an avid cyclist and continues to enjoy the study of life and environmental sciences.

This program is preliminary only. In the interests of ensuring the highest quality program content, session topics, scheduled times, titles, meeting rooms and speakers/presenters are subject to confirmation or change. Check www.bcsla.org for updates.



Post Environmental Landscapes of the North Coast of New South Wales: Resiliency through diversity and the reimagining of “Novel Landscapes”

Mark Perkins AILA

ABSTRACT In highly contested landscapes concepts of the (picturesque/natural) are most challenged by our desire to inhabit and conversely conserve them. Our many teleological constructions of landscape bound, embed and locate the built form and work on it over time. Our conception of landscape is a potentially resilient thing, emerging perhaps out of displacements (our need to quantify the distance and direction as we move from place to place and in turn communicate this journey). Our desire to hold on to an aesthetic of landscape and survey our Eden is quite strong. Perhaps this desire is a wrong turn in itself if we are to adapt to a rapidly changing environment as a result of global warming.

As we protect ecologies and encourage biodiversity through restoration we need to ensure we don't stymie opportunities to enhance the overall resiliency of “patched” landscapes. The overly managed, high input lifestyle landscapes clustered around the built form often relegate biodiversity to the bottom of the paddock while fighting the novel landscape closer to home. There needs to be a greater integration of Crown, private and public landscapes and a greater awareness of the potentialities for resilient ecologies that are unlikely to be what is at once familiar and nostalgic. Can we reimagine “Novel Landscapes” and in so doing increase diversity and resiliency?

BIO Mark Perkins AILA Mark is a registered member of the Australian Institute of Landscape Architects and is the principal of Ennismore Field, a boutique Landscape Architecture practice based in Bangalow on the Far North Coast of NSW Australia. He lives and works in a region rich in biodiversity and scenic beauty which is experiencing strong growth of the built environment. Mark studied and practiced as a visual artist in the 1980's and 1990's. He has been a practicing landscape architect since 2002.

“I'm driven by the championing of intellectual and design rigour within our profession. My passion is for the landscapes and ecology of Subtropical South East Australia”. - Mark Perkins



Training a new generation of professionals to advance community resilience: a holistic urban forestry program for greenspace practitioners & planners

Stephen R.J. Sheppard PH.D., ASLA

ABSTRACT To climate-proof our communities over the long term, we need to build expertise on resilience among tomorrow's professionals. Designers and managers of urban greenspace systems will need a holistic education addressing both biophysical infrastructure networks and social systems: a whole landscape approach. This paper lays out UBC's vision, and the surprisingly high demand, for an educational program in the neglected space between landscape architecture, forestry and arboriculture. It summarizes lessons learned in resilience education and literacy with students in the new Urban Forestry program, focusing on teaching climate change adaptation and mitigation.

The Bachelor of Urban Forestry (BUF) offered by Faculty of Forestry and School of Architecture & Landscape Architecture (SALA) integrates across landscape scales, addressing issues such as retrofitting whole neighbourhoods for stormwater systems, ecological restoration, role of urban forest canopy in offsetting future air-conditioning needs, providing multi-functional active transportation corridors, and promoting health & well-being. Core courses and a holistic capstone studio ensure that all student acquire experience in both design/planning and science/management, with Minors providing depth in Landscape & Recreation Planning or Urban Greenspace Management. The climate change curriculum is delivered through unique courses in adaptive management and “Visualizing Climate Change” (CONS 210), where ‘before and after’ student awareness testing show that the course changes how students see their community and understand its vulnerabilities/responses. Another course (FRST490/LARC 542) provides a landscape lens on resilience with on-the-ground planning/visioning projects, as in last year's award-winning student design for public art highlighting climate change along the proposed St. George Rainway.

BIO Stephen Sheppard PH.D., ASLA Stephen teaches in sustainable landscape planning, aesthetics, and visualization in the Faculty of Forestry and Landscape Architecture programme at UBC and is also is the Program Director for the new Urban Forestry undergraduate degree at UBC's Faculty of Forestry. He received a BA/MA in Agricultural and Forest Sciences at Oxford, a MSc. in Forestry at UBC, and a Ph.D. in Environmental Planning at UC. Berkeley. He directs the Collaborative for Advanced Landscape Planning (CALP), an interdisciplinary research group using perception-testing and immersive/interactive visualization to support public awareness and collaborative planning on sustainability issues. He has over 30 years' experience in environmental assessment and public participation internationally. He has written or co-written two books on visual simulation, and co-edited “Forests and Landscapes: Linking Ecology, Sustainability, and Aesthetics”, Volume 6 in the IUFRO Research series. Current research interests lie in perceptions of climate change, the aesthetics of sustainability, and visualization theory and ethics.

The Pope, A Poet, and a Patriot: Parallels and Variations

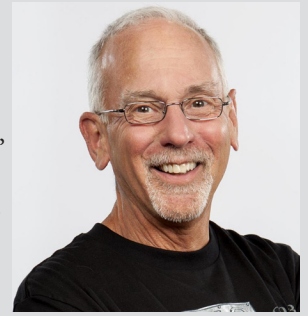
Don Shafer

ABSTRACT The Pope (Francis), a poet (Rachel Carson) and a patriot (Franz Fanon). This essay is about what these three writers have in common as well as their differences regarding the world we live in and interesting existential, political and economic points of view involving eco and social psychology, religion, foreign policy and centuries of socioeconomic inequalities around the world.

With so many great thinkers throughout time pointing to the frailties of humanity, the ills of society and the way we treat humans, animals and nature, it's hard to believe that we could be at the edges of the sixth extinction. Every decade a spokesperson surfaces with a poignant opinion and is provided their place in history to proclaim their particular point of view regarding the many attributes and complexities of the world we live in. This paper explores the similarities and differences between three of them.

For all of the careful thought over the ages it is difficult to understand how we got lost in the catastrophic effects of climate change, genocide, chemical warfare or the latest change in the American dream. Plato, Aristotle, Freud, Jung, Marx, Kant and so many others have eloquently warned us about the writing on the “signposts up ahead” throughout history. I hope to shine a light on a few of those signposts from three authors who stand out as they also saw the world through a different lens.

BIO Don Shafer is a veteran broadcaster, entrepreneur, community activist, student and pretty average guitar player. As President & CEO of Roundhouse Radio, Vancouver's newest radio station, Don and his team are committed to building a new “hyper” local radio station that's all about community. He is presently completing his MA at SFU and his thesis is titled the Many Faces of Denial and Climate Change.



KEYNOTE ② - Big, Messy City-making: Leveraging Growth for a More Resilient Surrey

Don Luymes MANAGER OF COMMUNITY PLANNING, CITY OF SURREY

ABSTRACT The City of Surrey's Sustainability Charter 2.0 and new OCP set out a roadmap towards resiliency. The rapid growth and development of the City (10,000 people per year) is both a challenge and an opportunity in terms of planning for sustainability and resiliency. Examples of planning for resiliency in Surrey:

- o City Centre – the development of a whole new downtown including new energy systems, urban parks and plazas, public realm
- o Light Rail Transit (LRT) – reshaping the City through transit investment and urban design
- o Biodiversity Conservation Strategy – knitting together the City's ecosystems over the next 30 years
- o Neighbourhood Concept Plans – integrating nature into complete neighbourhoods
- o Climate adaptation – Crescent Beach charrettes and planning & design for sea level rise
- o Urban Tree Canopy – the challenge of fighting for “one tree at a time” in the face of rapid development
- o What's Next?: a renewed focus on residential infill policies, gentle densification & neighbourhood engagement

Planning in Surrey is often messy and turbulent; the challenge is to keep our eye on the big picture and to use growth as a means to a healthier future City.

BIO Don Luymes is the Manager of Community Planning for the City of Surrey, responsible for growth management, City-wide and Neighbourhood plans, and policy development in a range of areas including zoning, housing, social planning, environment, heritage, agriculture and urban design.

Much of Don's earlier career was in academia, with faculty positions in landscape architecture at Penn State University and in the School of Architecture and Landscape Architecture at UBC. Don is currently an Adjunct Professor in the Master of Urban Design Program at UBC, where he teaches a course on Urban Design as Public Policy. Don began his career as an urban design consultant in Toronto including involvement in several award-winning design projects. He received a Master of Landscape Architecture degree from the University of Guelph and a Bachelor of Landscape Architecture degree from UBC.

Don regularly lectures and makes public presentations on a range of subjects related to urban planning and design, and serves as a guest lecturer in the School of Community and Regional Planning at UBC and the Urban Studies and City Programs at SFU.



SATURDAY, APRIL 1

This program is preliminary only. In the interests of ensuring the highest quality program content, session topics, scheduled times, titles, meeting rooms and speakers/presenters are subject to confirmation or change. Check www.bcsla.org for updates.

KEYNOTE ③ - Whole Systems Infrastructure Planning



Marta Farevaag BCSLA HONOURARY MEMBER, FCIP, PIBC

ABSTRACT PFS Studio led a multidisciplinary team for the original master plan in 2005 for the transformation of the UBCO campus from a small community college into a university striving to meet the design and sustainability objectives of UBCV. PFS has been involved in the 2009 update of the master plan, in the Whole Systems background study to the 2015 update, and currently on the structure plan for its Innovation Precinct. Marta will talk from the perspective of a planner on campus master plans prepared in close collaboration with landscape architects using UBCO as a key example and contrast it with the firm's work on other master plans on other campus including UBCV, BCIT, and Trinity Western University.

BIO Marta Farevaag BCSLA HONOURARY MEMBER, FCIP, PIBC Marta Farevaag is a founding principal of PFS Studio and an Urban Planner and Fellow of the Canadian Institute of Planners. For thirty years, she has been involved in planning, project management, and public consultation on many of PFS Studio's complex and multi-disciplinary projects. Her particular areas of interest are cultural landscapes, campus plans and heritage planning. Marta works at the interface of urban planning with landscape architecture and urban design. Areas of expertise involve design guidelines, land use planning, heritage resource planning, programming public space, commercial area revitalization, park and open space conceptual master planning, and public consultation processes. She regularly works on multidisciplinary teams addressing land use and urban design assignments. Marta has taught regularly in the departments of landscape architecture and planning at UBC.

Film: ONE BIG HOME 2016 | 88 min | Documentary

Directed by Thomas Bena

Synopsis Gentrification comes in many forms. On the tiny island of Martha's Vineyard, where presidents and celebrities vacation, trophy homes threaten to destroy the island's unique character.

Twelve years in the making, *One Big Home* follows one carpenter's journey to understand the trend toward giant houses. When he feels complicit in wrecking the place he calls home, Thomas Bena takes off his tool belt and picks up a camera. Bumping up against angry homeowners and builders who look the other way, he works with his community and attempts to pass a new bylaw to limit house size.

"I hope my film will spark a discussion about the way we regard housing, land ownership, and the economic forces that shape our communities. Rather than throwing up our arms and saying "you can't fight progress", communities can stand up for themselves, their way of life, and the natural environment." – Thomas Bena, Director – *One Big Home*



BIO Thomas Bena DIRECTOR earned a degree in marketing from UMass Amherst in 1989, but working in the business world wasn't for him, so after nine short months he grabbed a backpack and a surfboard and headed to Australia to "find himself." Almost a decade later, he discovered Martha's Vineyard. In 2001, he founded the Martha's Vineyard Film Festival (now in its seventeenth season). His film directing, editing, and producing credits include *Casa del Soul*, a short surfing film, *Jumpstart My Vega*, a travelogue/surf film, and *Capawock*, a short film starring Wampanoag medicine man Luther Madison. *One Big Home*, which took twelve years to make, is his first feature-length documentary film.

MOBILE TOURS

SATURDAY, APRIL 1

Tours leave on time (rain or shine). Please wear sensible footwear and dress appropriately for the climate.

① URBAN SKETCHING with Lindsay Clement MBCSLA, B.LARCH

Bring your favourite drawing materials and join Lindsay on this urban sketching excursion in downtown Kelowna. Beginning with a 10-15 minute gathering and introduction, the group will walk to a nearby destination for a 50 minute urban sketching experience.

Lindsay Clement MBCSLA, B.LARCH is Landscape Architect based in Kelowna. She loves to sketch, draw, paint, and use graphic markers. She was introduced to the practice of urban sketching at a BCSLA conference years ago and embraced it, taking a small sketchbook on her travels to experience the places and record the memories in her own way.



This program is preliminary only. In the interests of ensuring the highest quality program content, session topics, scheduled times, titles, meeting rooms and speakers/presenters are subject to confirmation or change. Check www.bcsla.org for updates.

Tours leave on time (rain or shine). Please wear sensible footwear and dress appropriately for the climate.

② KELOWNA'S DOWNTOWN PUBLIC SPACES with Andrew Gibbs MBCSLA; Terry Barton

The City of Kelowna has made a deliberate and determined effort to improve the quality and variety of its urban open spaces downtown. This tour will visit some of the streets and parks of the downtown. Andrew will provide background to and highlight of various projects along the way.



Andrew Gibbs MBCSLA is a UBC Landscape Architecture graduate. He started his career in Vancouver and moved to Kelowna in 1992 to continue his consulting career. He has worked at the City of Kelowna for 14 years, all of those involved in some way with the planning, design or development of public spaces. His current role is as a senior project manager, responsible for development of the City's buildings and public spaces.

Terry Barton is the Manager of Urban Planning for the City of the Kelowna, responsible for excellence in city planning by ensuring safe, responsible and sustainable development. He plays a critical role in the growth of the city while also ensuring its beloved features are preserved. From high rises in the downtown, to walkable mixed-use developments to the charming character of the City's heritage neighborhoods, Terry strives to make Kelowna a great place. He played a significant role in the planning and public consultation stages for the Bernard Avenue Revitalization project which received a Planning Institute of BC "Excellence in Planning" award.

③ UBC OKANAGAN with Marta Farevaag BCSLA (HONOURARY), FCIP, PIBC, Dean Gregory MBCSLA, ASLA, LEED® AP

UBC's Okanagan campus has grown exponentially since it opened its doors in 2005 and now has a population that includes over 9,000 students, faculty and staff. Ongoing development of the campus is guided by the Okanagan Campus Plan (2015), the Whole Systems Infrastructure Plan (2016), the Integrated Rainwater Management Plan (underway), and other progressive strategies, guidelines and policies. Each of these plans is informed by the unique Okanagan environment, landscape and culture. Dean Gregory, the University Landscape Architect, and Marta Farevaag, the Planner on the original Master Plan team in 2005, will provide a guided tour of the existing campus landscapes and include an overview of upcoming projects on campus and emerging plans for the Innovation Precinct, our vision for creating an outstanding learning environment with enhancements to public spaces, informal learning spaces, recreation, services and amenities.

Dean Gregory MBCSLA, ASLA, LEED® AP In addition to directing the University's award-winning \$46M Public Realm Plan for the Vancouver campus, he provides leadership, conceptual design development, and professional advice for all policy initiatives and capital improvements related to campus landscape architecture and design on both campuses. Prior to joining the University of British Columbia in 2009, he was in private practice in Chicago, Seattle and Vancouver. Dean received a Bachelor of Arts degree in Urban Studies at the University of Toronto and a Master's degree in Landscape Architecture from the University of Guelph in 1993.



④ MISSION CREEK PARK with Don Dobson PENG

Tour of Mission Creek Restoration Initiative Phase 1 project

Mission Creek is one of the Okanagan Valley's most important waterways, supplying roughly 25 percent of Okanagan Lake's inflow waters. In 2013, the MCRI begin work on a major dike setback to reconnect the stream to the natural floodplain. The project was divided into the two stages. Stage 1 re-naturalized the floodplain function by realigning a 500-metre section of dike on the south side of the creek between Casorso Road and Gordon Drive. Fish and wildlife stocks will be increased by enhancing their habitats within the expanded floodplain. This includes increased gravel stability within a section of Mission Creek that provides the most valuable kokanee spawning habitat within the entire watershed, as well as improvements to riparian habitat for a wide range of wildlife species. Stage 2 restored important fish habitat features within Mission Creek, including meanders, pools, and overhead cover. This will increase rearing areas for kokanee and rainbow trout, and includes areas of refuge from high temperatures during summer low-flow periods, and from predators such as osprey, blue herons, ducks, and raccoons. Read more at www.missioncreek.ca



Don Dobson PENG Don is a professional engineer who assisted with the design and construction of MCRI Phase 1. He has worked in the water resources field for many years and has extensive experience in flood protection, dike design and construction and watershed management.

RECEPTIONS

This program is preliminary only. In the interests of ensuring the highest quality program content, session topics, scheduled times, titles, meeting rooms and speakers/presenters are subject to confirmation or change. Check www.bcsla.org for updates.

Welcoming Okanagan Connection Reception

Proudly Sponsored by: Abbotsford Concrete Products Ltd.

Friday, March 31: The Welcome Reception is one of the most popular events of the year! This is the best chance to network and socialize on the first night of the conference. Senior practitioners, emerging professionals, presenters, allied professionals, supporters and exhibitors get to know each other and swap business cards. Listen to the experts engage each other in a dialogue about the aspects that were talked about in the day's session.

We have worked with Iain Rennie, Award Winning Executive Chef of the Delta Grand Okanagan Resort, on a special menu that will showcase the best that the BC Interior has to offer. The food will include fresh palate pleasing selections from local farms and ranches, abundant gardens and orchards. There will be delicious selections available from local breweries, vineyards, distilleries and cideries to round out the menu.

The reception cost is covered in full conference registration or your Friday one-day Registration fee.

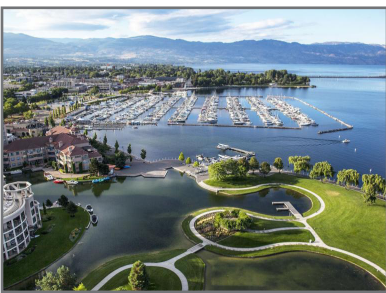


Image: Culinaire Magazine



Image: ResortsandLodges.com



Image: HelloBC

BCSLA Closing Reception

Proudly Sponsored by: T. Moscone & Bros. Landscaping Ltd.

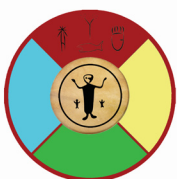
Saturday, April 1: Meet the attendees to discuss the conference proceedings in an informal atmosphere while celebrating the profession in the heart of BC's Okanagan as the conference winds down. Delegates will have the opportunity to congratulate award winners and meet the new BCSLA Board of Directors. Delegates often form groups and head out on their own to explore local eateries and visit with new friends and colleagues.

THANK YOU & GIVING BACK

The BC Society of Landscape Architects is pleased to recognize the contributions of the many participating presenters at the 2017 BCSLA Conference while giving back to the community. In lieu of traditional presenter gifts, we will make a donation on their collective behalf to a non-profit organization that reflects the values of the BCSLA and our Members. This year we are pleased to report that the **En'owkin Centre** has been selected by the BCSLA Conference Program team. The word En'owkin is an Okanagan conceptual metaphor which describes a process of clarification, conflict resolution and group commitment. With a focus on coming to the best solutions possible through respectful dialogue, literally through consensus. The En'owkin is a dynamic institution, which puts into practice the principles of self-determination and the validation of cultural aspirations and identity.

En'owkin Centre

The En'owkin Centre and ECommunity Place (ECommunity) in Penticton are helping to preserve and protect the Indigenous plants, wildlife, culture and spirituality found on the land. It brings together lands & learning, conservation & culture on a 100-hectare site located on the West side of the Okanagan River Floodplain. Guided interpretive programs provide schools with the educational programs that incorporate curriculum projects which use studies, cultural arts, story telling and Indigenous drama; thus raising visitor awareness around environmental values and the Syilx culture.

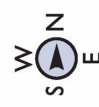
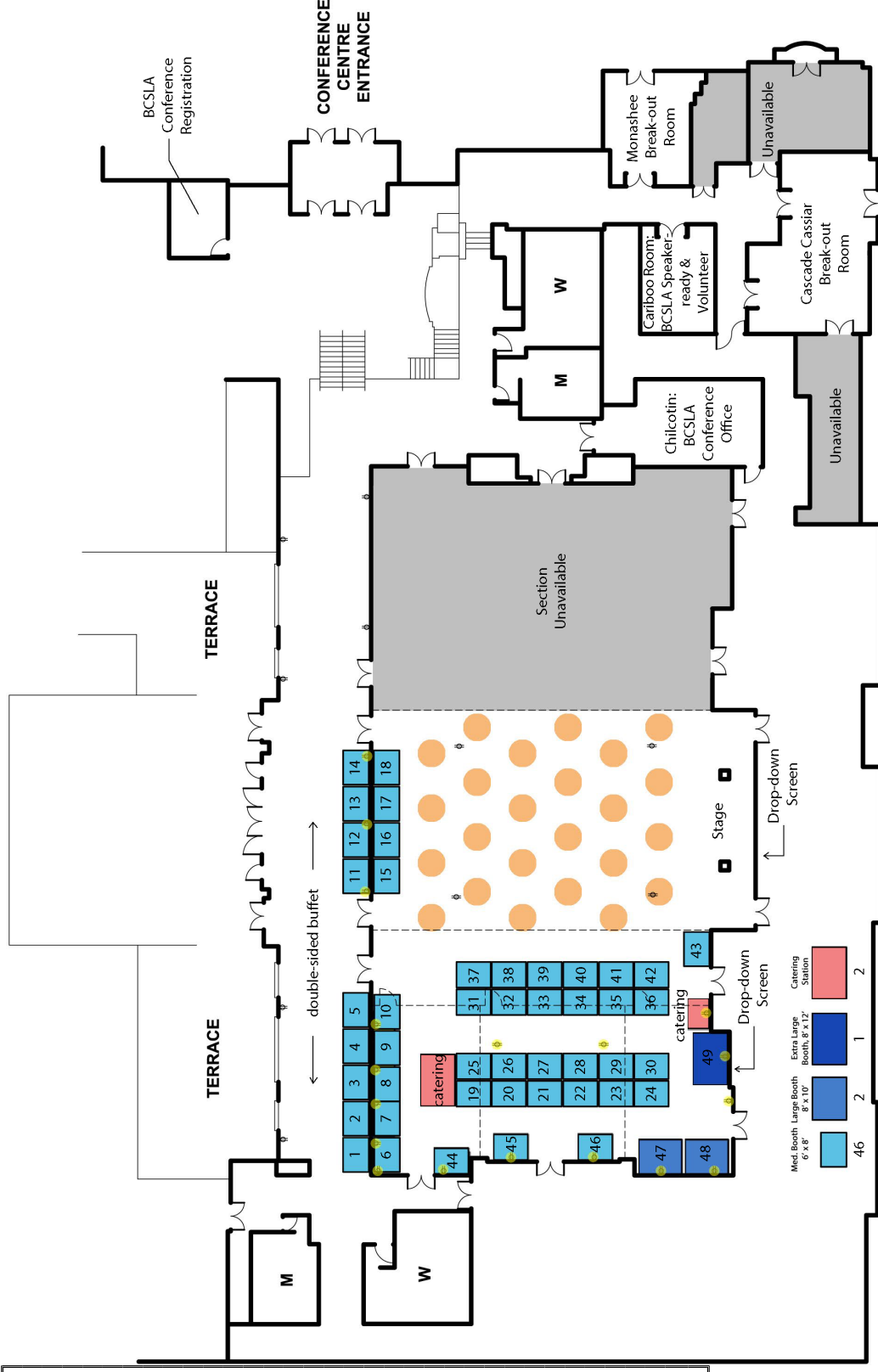


www.enowkincentre.ca

Read more about the En'owkin Centre: <http://www.enowkincentre.ca>

DIRECTORY

- 2 Corix Water Products
- 3 Stone Event Imports Ltd.
- 4 Romex Canada West
- 5 Expocrete an Old Castle Company
- 6 Mutual Materials
- 7 Premier Tech Home & Garden - IGC
- 8 Northwest Landscape & Stone Supply
- 9 Marathon Surfaces Inc.
- 10 Henderson Recreation Equipment Ltd.
- 11 Abbottsford Concrete Products
- 12 Sudden Fun Recreation Equipment Ltd.
- 13/14 CDM2 Lightworks
- 15/16/17 Habitat Systems Inc.
- 18 WMMW Reprographics
- 19 Western Turf Farms Ltd.
- 20 Okanagan Perfect Turf Synthetic Grass Ltd.
- 21 ACO Systems Ltd.
- 22 Ennis-Flint
- 23 Bartlett Tree Experts
- 24 Maglin Site Furniture
- 25 SLS Group Industries Inc.
- 26 Tournesol Siteworks
- 27 Basalite Concrete Products ULC
- 28 Vortex Aquatic Structures International
- 29 DeepRoot Canada Corp.
- 30 Symmetry Lighting
- 31 Earthscape
- 32 Park Works Inc.
- 33 Suttle Recreation
- 34 Armtec
- 35 Swing Time Distributors Ltd.
- 36 Citygreen West Inc.
- 37 RecTec Industries
- 38/39 Waterplay Solutions Corp.
- 40 Wishbone Site Furnishings



THANK YOU TO OUR GENEROUS SPONSORS FOR THEIR SUPPORT:

PLATINUM SPONSORS



SILVER SPONSORS



BRONZE SPONSORS



EXHIBITORS



IN-KIND

